

**NAROOMA  
FOREST RALLY**



Dean Ridge and Dean George – Winners of the 2023 Horizon Apartments Narooma Forest Rally.  
Photo courtesy of Roy Meuronen Photography

## Service Instructions

24th August 2024

Round 4 of the NSW State Rally Championship

Round 6 of the East Coast Classic 2WD Rally Series

Round 6 of the East Coast Classic 4WD Rally Series

Round 5 of the NSW Clubman Rally Series

Round 5 of the NSW Hyundai/Kia Rally Series

Round 5 of the Techworkz Automotive ACT Regional Rally Series



**Welcome to the 2024 Damesa Industries Stages and Horizon Apartments Narooma Forest Rally** hosted by the Brindabella Motor Sport Club. The service park is conveniently located near the main Highway and adjacent to Rally HQ. The area is on a grass park so if we follow some very basic rules, we will be back here next year.

Competitors with large, heavy trucks are not to drive onto the grassed areas. Competitors may use the gravel/asphalt car parks at the Bill Smyth Oval.

Please take all your rubbish with you! During refuelling please ensure no fuel spills onto the ground and the same applies to oils and coolants. Remember safety is important so be careful when working under a car and no smoking near any refuelling.

At the conclusion of the event there will be a presentation in Montague Room at Club Narooma (Rally HQ). They have a fantastic bistro choice for all crews and spectators, hope to see you there.

For fuel calculations distances are:

**Damesa Industries Stages:**

From Start to Service 1		
Service Time		60 minutes
Total	Liaison	Competitive
154	68	86
From Service 1 to Service 2		
Service Time		40 minutes
Total	Liaison	Competitive
80.5	34.10	46.40
From Service 2 to Finish		
Service Time		NIL
Total	Liaison	Competitive
62	37	25

From Start to Remote Refuel 1			From Start to Remote Refuel 2		
Total	Liaison	Competitive	Total	Liaison	Competitive
26	14	12	74	26	51
From Remote Refuel 1 to Remote Refuel 2			From Start to Remote Refuel 2		
Total	Liaison	Competitive	Total	Liaison	Competitive
78	38	40	74	26	51
From Remote Refuel 2 to Service 1					
Total	Liaison	Competitive			
52	17	36			

From Service 1 to Remote Refuel 3		
Total	Liaison	Competitive
26	14	12
From Remote Refuel 3 to Service 2		
Total	Liaison	Competitive
56	20	36

**Horizon Apartments Narooma Forest Rally:**

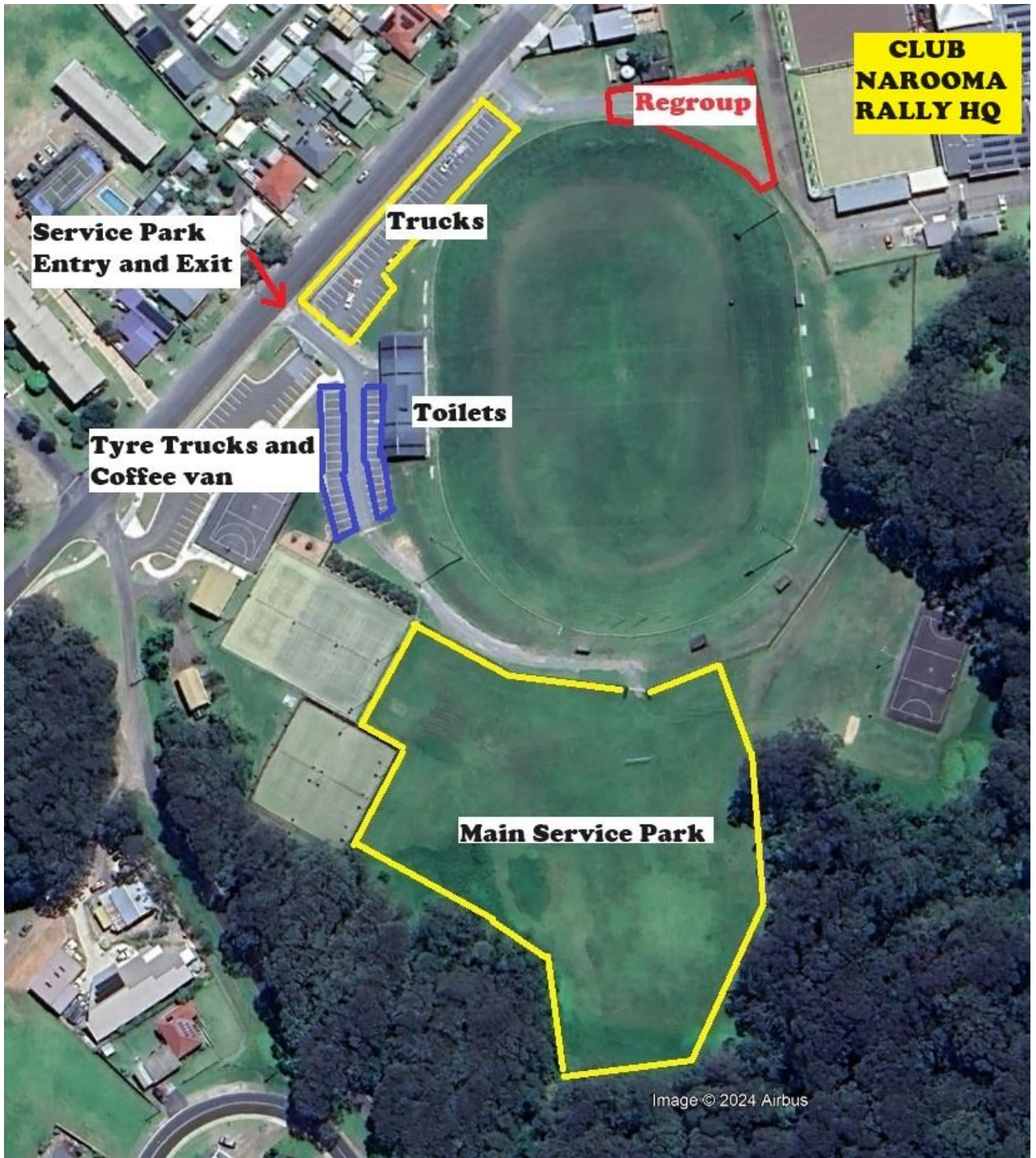
From Start to Service 1			From Service 1 to Finish		
Service Time		60 minutes	Service Time		NIL
Total	Liaison	Competitive	Total	Liaison	Competitive
154	68	86	80.5	34.1	46.4

From Start to Remote Refuel 1		
Total	Liaison	Competitive
26	14	12
From Remote Refuel 1 to Remote Refuel 2		
Total	Liaison	Competitive
78	38	40
From Remote Refuel 2 to Service 1		
Total	Liaison	Competitive
52	17	36

From Start to Remote Refuel 2		
Total	Liaison	Competitive
74	26	51



# Service park diagram



## Itinerary



**Page  
No  
1**

Sunrise 0630  
Sunset 1733, Dark 1759

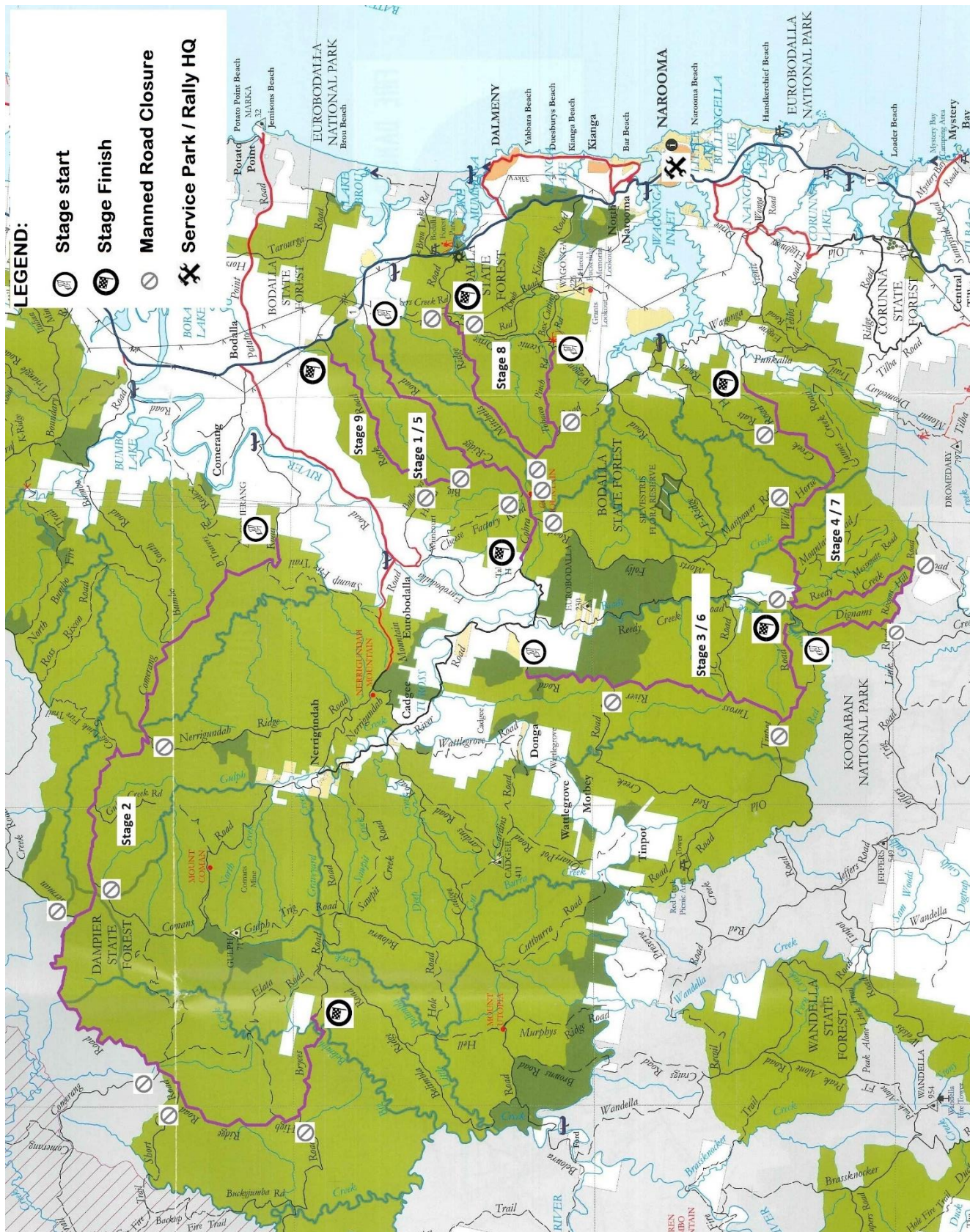


## Event Itinerary

Road Section	Distance km	Average km/h	Time Allowed	Special Stage Comp distance	Time, car 1
0 Narooma Start	13.83	48.81	0:17	<b>Liaison I</b>	Start 10:30
1 C Ridge Road					10:47
1 C Ridge Road	27.41	41.12	0:40	<b>1 PCD Engineering I</b>	Start 10:50
2 Comerang Forest Road				11.38	11:30
2 Comerang Forest Road	62.74	47.06	1:20	<b>2 Maisie's Place</b>	Start 11:33
3 Tuross River Road				39.98	12:53
3 Tuross River Road	17.27	47.10	0:22	<b>3 Simply Music Management I</b>	Start 12:56
4 Dignams Creek Road				15.52	13:18
4 Dignams Creek Road	33.56	20.14	1:40	<b>4 Wild Horse I</b>	Start 13:21
4A Narooma Regroup In			Service 60	19.93	15:01
4A Narooma Regroup In			0:35	<b>Regroup I</b>	Start 15:04
4B Narooma Regroup Out					15:39
4B Narooma Regroup Out	13.79	48.67	0:17	<b>Liaison II</b>	Start 15:39
5 C Ridge Road					15:56
5 C Ridge Road	16.35	44.59	0:22	<b>5 PCD Engineering II</b>	Start 15:59
6 Tuross River Road				11.38	16:21
6 Tuross River Road	17.27	47.10	0:22	<b>6 Simply Music Management II</b>	Start 16:24
7 Dignams Creek Road				15.52	16:46
7 Dignams Creek Road	33.56	26.85	1:15	<b>7 Wild Horse II</b>	Start 16:49
7A Narooma Regroup In			Service 40	19.93	18:04
7A Narooma Regroup In			0:15	<b>Regroup II</b>	Start 18:07
7B Narooma Regroup Out					18:22
7B Narooma Regroup Out	10.23	40.92	0:15	<b>Liaison III</b>	Start 18:25
8 Tobacco Pinch Road					18:40
8 Tobacco Pinch Road	18.23	49.72	0:22	<b>8 Mitchell's Pinch</b>	Start 18:43
9 C Ridge Road				11.08	19:05
9 C Ridge Road	29.98	51.39	0:35	<b>9 Matador Spitz</b>	Start 19:08
HQ Club Narooma				13.52	19:43
<b>EVENT TOTAL</b>	<b>294.22</b>			<b>158.24</b>	



# Overview of Stages



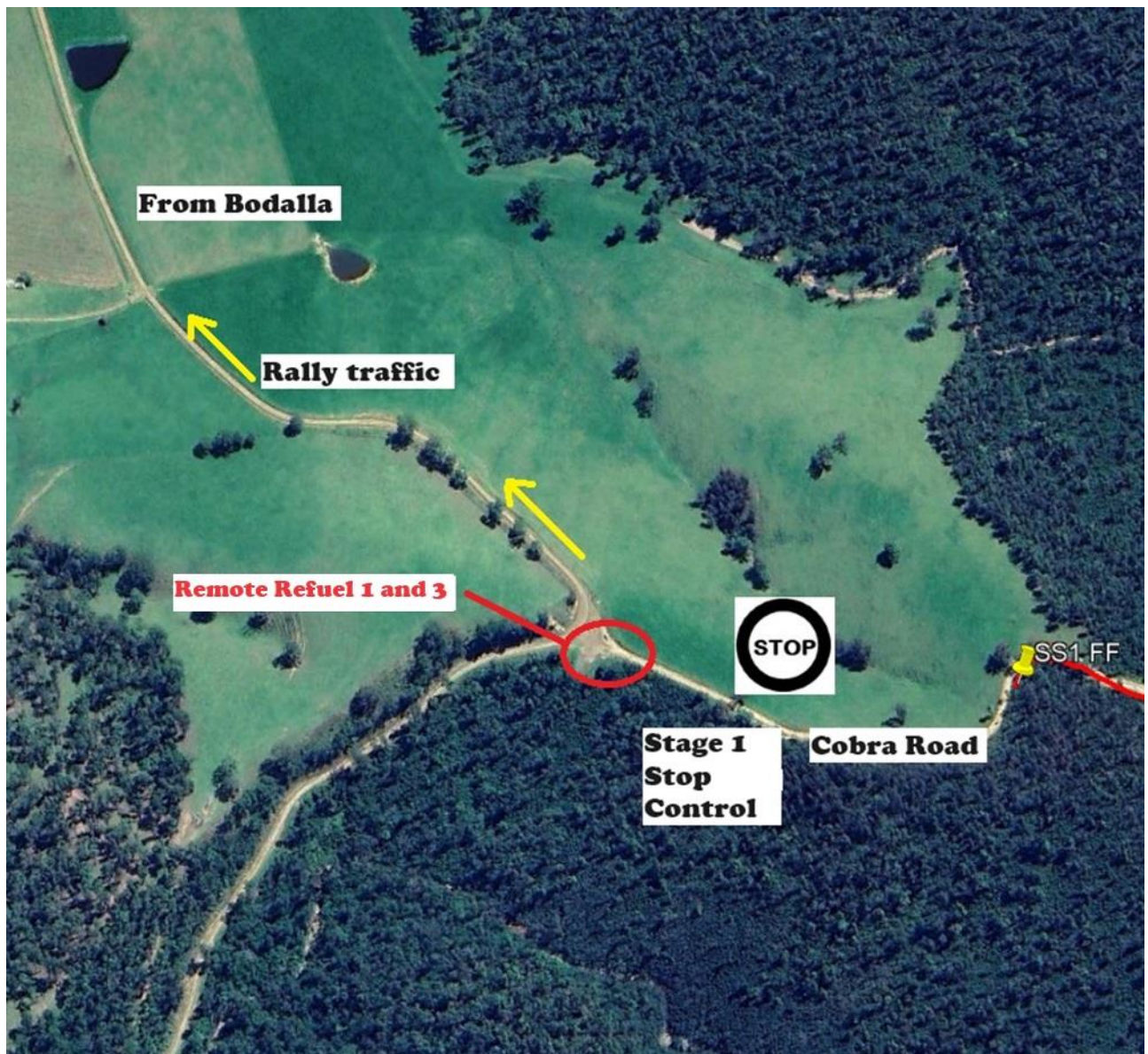


## Directions to Remote Refuels

### Directions to Remote Refuel 1 and 3 (Between Stages 1 and 2, Stages 5 and 6)

- Turn right from Service Park, then turn left at roundabout.
- Head North on Princes Highway.
- Follow for 16.3 kilometres.
- 60km/h – Bodalla
- Follow for 1.5 kilometres
- Turn left onto Eurobodalla Road (Opposite Police station).
- Follow for 14.7 kilometres.
- **CAUTION: AFTER 2.6 kms – TWO WAY RALLY TRAFFIC**
- Turn left onto Cobra Road.  
Refuel area is on left. (36° 10'35.19"S 149° 58' 43.32"E)

This is the end of Stage 1 and 5. **DO NOT BLOCK THE ROADS.**





### Directions to Remote Refuel 2 (Between Stage 2 and Stage 3)

- From Remote Refuel 1, return to Eurobodalla Road and turn left (away from Bodalla).
- Follow for 3.20 kms.
- Refuel area is on left before the turnoff to Tuross River Road (on left)
- Return to Service Park after Remote Refuel 2





## Directions to the start of stages (From Bill Smyth Oval)

### Stage 1 / 5: PCD Engineering (also Stage 9: Matador Spitz):

- Turn right from Service Park, then turn Left at roundabout.
- Head North on Princes Highway.
- Follow for 13.1 kilometres.
- Turn left onto C-Ridge Road.
- Follow for 650 metres. (36° 7'45.00"S 150° 4'0.35"E)



### Stage 2: Maisie's Place:

- Turn right from Service Park, then turn left at roundabout.
- Head North on Princes Highway.
- Follow for 16.3 kilometres.
- 60km/h – Bodalla
- Follow for 1.5 kilometres
- Turn left onto Eurobodalla Road (Opposite Police station).
- Follow for 2.6 kilometres.
- Turn right onto Comerang Road.
- Follow for 3.7 kilometres. (36° 06' 27.4"S 149° 59' 56.8"E)



### Stage 3 / 6: Simply Music Management:

- Turn right from Service Park, then turn left at roundabout.
- Head North on Princes Highway.
- Follow for 16.3 kilometres. 60 km/h (Bodalla)
- Continue on Princes Highway for another 1.5 kilometres.
- Turn left onto Eurobodalla Road.
- Follow for 18.1 kms. **Note: Eurobodalla Road becomes a gravel road after 10.1 kms.**
- Turn left onto Tuross River Road.
- Follow for 1.1 kilometres. (36° 10' 37.3"S 149° 56' 56.30"E )



### Stage 4 / 7: Wild Horse:

- Turn right from Service Park, then turn left at roundabout.
- Head North on Princes Highway.
- Follow for 16.3 kilometres. 60 km/h (Bodalla)
- Continue on Princes Highway for another 1.5 kms.
- Turn left onto Eurobodalla Road.
- Follow for 16.9 kms. **Note: Eurobodalla Road becomes a gravel road after 10.1 kms.**
- Turn left onto Reedy Creek Road. (36°10'52.96"S 149°57'43.27"E )
- Follow for 8.5 kms.
- Turn right onto Reedy Creek Road.
- Follow for 2.3 kms.
- Turn right onto Tinpot Road.
- Follow for 580 metres then keep left onto Dignams Creek Road.
- Follow for 1.6 kilometres to Time Control. (36°15'56.24"S 149°57'27.13"E)
- **CAUTION: There is a rough creek crossing (approximately 100 metres) before the time control.**



### Stage 8: Mitchell's Pinch:

- Turn right from Service Park, then turn left at roundabout.
- Head North on Princes Highway.
- Follow for 3.6 kilometres.
- Turn left onto Kianga Road (Just after bridge). **Caution – two way traffic.**
- Follow for 4.2 kilometres.
- Keep right onto Box Cutting Road.
- Follow for 2.2 kilometres. Time Control will be directly ahead. **CAUTION: Box Cutting Road turns hard left. Possible oncoming traffic.**



## Directions to the end of stages (Stop Controls) (From Bill Smyth Oval)

### Stage 1 / 5: PCD Engineering:

- Turn right from Service Park, then turn left at roundabout.
- Head North on Princes Highway.
- Follow for 16.3 kilometres.
- 60km/h – Bodalla
- Follow for 1.5 kilometres
- Turn left onto Eurobodalla Road (Opposite Police station).
- Follow for 14.7 kilometres.  
**CAUTION: AFTER 2.6 kms – TWO WAY RALLY TRAFFIC**
- Turn left onto Cobra Road.
- Refuel area is on left. (36° 10'35.19"S 149° 58' 43.32"E)

### Stage 2: Maisie's Place:

- Turn right from Service Park, then turn left at roundabout.
- Head North on Princes Highway.
- Follow for 16.3 kilometres. 60 km/h (Bodalla)
- Continue on Princes Highway for another 1.5 kms.
- Turn left onto Eurobodalla Road. Follow signs to Nerrigundah.
- Follow for 8.9 kms.
- Turn right (Signposted Nerrigundah Mountain Road)
- Follow for 9.3 kilometres then turn right over bridge to stay on Eurobodalla Road.
- Turn right at Cenotaph (War memorial). Follow for 300 metres.
- At the end of the bitumen, keep left onto Belowra Road.
- Follow for 4.9 kilometres
- Turn right onto Bryces Road. Don't turn hard right. Follow main road.
- Follow for 5.2 kilometres. (36° 07' 1.03"S 149° 48' 36.72"E)

### Stage 3 / 6: Simply Music Management:

- Turn right from Service Park, then turn left at roundabout.
- Head North on Princes Highway.
- Follow for 16.3 kilometres. 60 km/h (Bodalla)
- Continue on Princes Highway for another 1.5 kms.
- Turn left onto Eurobodalla Road.
- Follow for 16.9 kms. **Note: Eurobodalla Road becomes a gravel road after 10.1 kms.**
- Turn left onto Reedy Creek Road. (36°10'52.96"S 149°57'43.27"E )  
**CAUTION! POSSIBLE TWO-WAY TRAFFIC**
- Follow for 8.5 kms.
- Turn right to stay on Reedy Creek Road.
- Follow for 2.3 kms.
- Turn right onto Tinpot Road.
- Follow for 580 metres (36°15'31.00"S 149°57'50.59"E )

### Stage 4 / 7: Wild Horse:

- Turn right from Service Park, then turn right at roundabout.
- Head South on Princes Highway for 2.6 kilometres.
- Turn right onto Old Princes Highway
- Follow for 2.6 kilometres.
- Turn right onto Wagonga Scenic Drive.
- Follow for 4.7 kms. **Note: Wagonga Scenic Drive becomes a gravel road.**
- Turn left onto Tilba Road (Just before Punkalla Bridge). (36°14'3.80"S 150° 4'4.37"E)
- Follow for 1.1 kms.
- Keep Right onto Wild Horse Creek Road.
- After 250m keep right. Follow for 1.9kms to the Stop Control. (36°52.44"S 150° 2'39.26"E)



**Stage 8: Mitchell's Pinch:**

- Turn right from Service Park, then turn left at roundabout.
- Head North on Princes Highway.
- Follow for 8.6 kilometres.
- Turn left onto Mitchell's Ridge Road.
- Follow for 1.8 kilometres.

**Stage 9: Matador Spitz:**

- Turn right from Service Park, then turn left at roundabout.
- Head North on Princes Highway.
- Follow for 15.5 kilometres.
- Turn Hard left onto Big Rock Road. **NOTE:** Turn-off is hard to see.
- Follow for 1.3 kilometres.

## Directions from end of stages to the Service Park

### **Stage 1 / 5: PCD Engineering:**

- Turn right onto Eurobodalla Road. Follow for 14.7 kilometres.
- Turn right onto Princes Highway. Follow for 17.8 kilometres.
- Turn right at roundabout, then 150 metres, turn left into Service Park.

### **Stage 2: Maisie's Place:**

- Continue on Bryces Road for 5.2 kilometres.
- Turn left onto main road (unsignposted Belowra Road) and head down hill
- Follow for 4.6 kilometres.
- Keep right and follow for 360 metres onto bitumen.
- 50 km/h.
- Follow for 260 metres.
- Turn left at Cenotaph (War Memorial).
- Follow for 290 metres the Turn left and cross bridge (Signposted: Bodalla). **DO NOT TAKE THE OTHER ROAD TOWARDS BODALLA – it is much longer.**
- Follow main road for 9.3 kilometres.
- Turn Left on Eurobodalla Road (Signposted: Bodalla)
- Follow for 8.9 kilometres.
- Turn right onto Princes Highway. Follow for 17.8 kilometres.
- Turn right at roundabout, then 150 metres, turn left into Service Park.

### **Stage 3 / 6: Simply Music Management:**

- Turn left onto Tinpot Road. Follow for 500 metres.
- Turn left onto Reedy Creek Road and follow for 2.3 Kilometres.
- Turn left to stay on Reedy Creek Road. Follow for 8.5 kilometres.
- Turn right onto Eurobodalla Road. Follow for 16.9 kilometres.
- Turn right onto Princes Highway. Follow for 17.8 kilometres.
- Turn right at roundabout, then 150 metres, turn left into Service Park.

### **Stage 4 / 7: Wild Horse:**

- Continue along Wild Horse Creek Road for approximately 2.2 kilometres.
- Turn left onto Tilba - Punkalla Road (Signposted: Narooma).
- Follow for 1.1kms
- Turn right onto Wagonga Scenic Drive.
- Follow for 4.7 kilometres.
- Turn left onto Old Highway. Follow for 2.6 kilometres.
- Turn left onto Princes Highway. Follow for 2.6 kilometres.
- Turn left at roundabout then 150 metres, turn left into Service Park.

### **Stage 8: Mitchell's Pinch:**

- Continue along Mitchell's Ridge Road for approximately 1.8 kilometres.
- Turn right onto the Princes Highway.
- Follow for 8.6 kilometres.
- Turn right at roundabout, then 150 metres, turn left into Service Park.

### **Stage 9: Matador Spitz:**

- Continue along Big Rock Road for approximately 1.3 kilometres.
- Turn right onto the Princes Highway.
- Follow for 15.5 kilometres.
- Turn right at roundabout, then 150 metres, turn left into Service Park.